

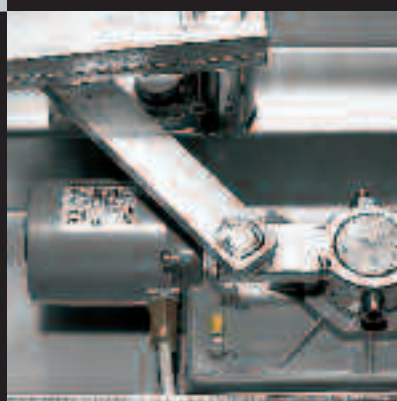
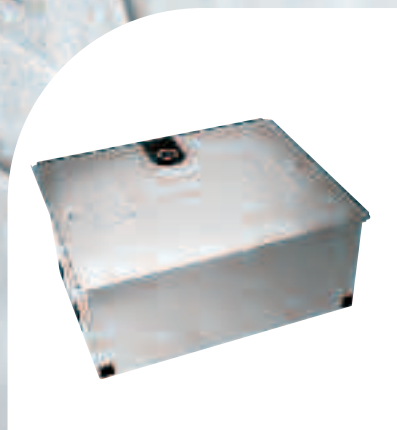
DEA[®]



SWING

GHOST 200

Underground automation for swing gates





Electromechanical underground automation for swing gates

GHOST 200

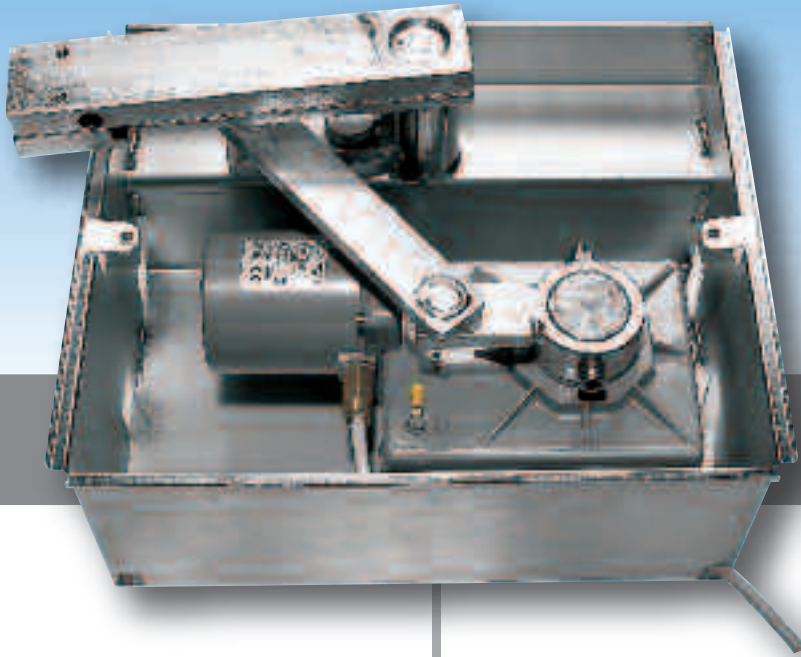
HIDDEN POWER

GHOST 200 is the **neatest** solution for the automation of swing gates. The **underground fitting** does not modify shape and design of the gate. The **sturdiness** of the operator and the **precision of movement** make Ghost 200 a real elite automation.



RANGE

GHOST



For standard solutions

GHOST 200: operator
230V AC.

GHOST 200L: operator
230V AC, slow.

For solutions in low voltage*

GHOST 200/24: operator 24V DC.

**the automation in 24V DC enables programmable limit switches, final slow-down in opening / closing and reverser function on obstacle; moreover a battery backup system enables the operation in case of power failure. The boards can be easily programmed through digital display and 3 buttons.*

The DEA System control boards are planned to optimize the performances of Ghost 200 range. It is suggested to use control boards with electronic force adjustment: 202RR/C and 212E/C (230V AC) or 224RR/C (24V DC).

The models

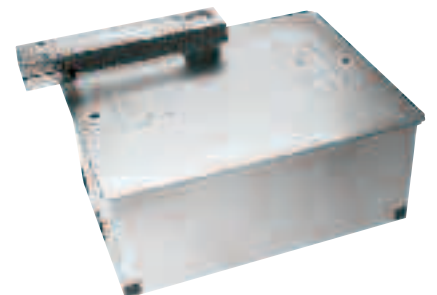
- Electromechanical automation, 230V AC and 24V DC.
- Suitable for leafs up to 3,5 m long.
- Underground fitting.
- Very sturdy and watertight seal.
- Simple and safe unlocking system by special key, both internal and external.
- Grease soaked gear motor.
- Quick and silent.
- Opening up to 180° (optional).
- Galvanized or stainless steel foundation case.



Simple and safe unlocking system by special key.



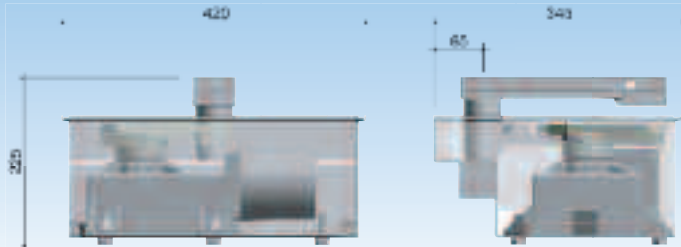
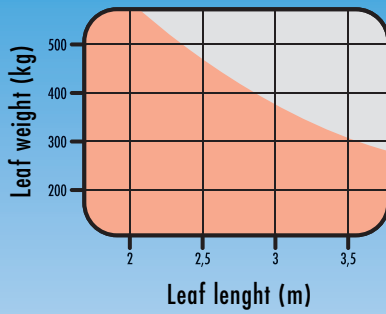
Kit 200: Complete automation with DEA original accessories.



Galvanized or stainless steel foundation case.

USE LIMITS

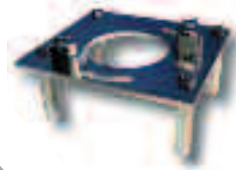
The height and structure of the leaf, together with the presence of strong winds, can reduce the data carried in the table.



accessories



Art. 216 - To get an opening angle up to 180°.



Art. 218 - The mechanical limit switch, easy to adjust.

200

Technical information

Model	200	200L	200/24
Motor power supply (V)	230 V a.c.	230 V a.c.	24 V d.c.
Capacity (W)	400	330	150
Duty cycle	50%	50%	60%
Max torque (Nm)	320	300	210
Operating temperature (°C)	-20°÷60°	-20°÷60°	-20°÷60°
Opening time 90° (s)	17	26	16
Protection level	IP 67	IP 67	IP 67
Weight with packing (Kg)	14,5	14,5	14

